

***VIBRANT COLOR THAT GIVES
A STUNNING PRESENCE TO
YOUR BUILDING.***



Natural Woodgrain Finishes



GRAND VIEW
DISTRIBUTION CORP

Grand View's ACM is the Highest Standard of Quality, Durability and Beauty

With excellent durability, weather resistance, lightweight and easy to handle fire rated aluminum composite panels, creative building designs can be brought to life. Coated with Kynar 500 PVdF (Polyvinylidene difluoride) supplied by PPG Inc., the coils deliver consistent and long lasting appearances. Kynar 500 is the most superior grade resin that provides outstanding resilience to abrasion, humidity, impact, salt spray and weatherability.

All coatings are tested and supported by PPG Inc. to AAMA 605.2 requirements. Moreover, finishes come in 2 or 3 coats as well as 5 to 30 years / warranty. For specific warranty periods, please consult with our team before order placement.

The color chart proposes a wide variety of our standard natural woodgrain finishes. Be sure to view our additional brochures for our standard solid and metallic colors, stone pattern (texture or non-texture), and real stone patterns. If you do not see the color or pattern that matches your need, we will be glad to produce the custom color for you.



Hamad International Airport, Doha Qatar
Bechtel | HOK Hellmuth, Obata + Kassabaum
with Grand View ACM, March 2016



HDC Shilla I'PARK Duty Free Shop
Owner: Hyundai Development Co. & Hotel Shilla
Hyundai Group & Samsung Group
Jun Mitsui & Associates Inc. Architects
with Grand View ACM, March 2016



Busan Gwangandaegyo (Diamond Bridge)
South Korea
with Grand View ACM | 2003

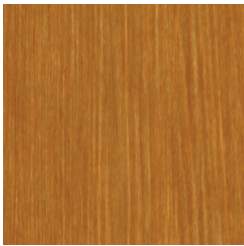
Finish Performance Properties

Property	Test Method	Coil-coated Aluminum
Flexibility (T-bend)	ASTM D4145	1-T No cracking
Specular Gloss @ 60°	ASTM D523	Ranges from 25% to 40%
Reverse Impact - Crosshatch	ASTM B2794	No cracking
Pencil Hardness	ASTM D3363; NCCA 11-12	HB - H
Abrasion Resistance	ASTM D968	40 min
Alkali 10% @ 1 hr	ASTM D1308	No effect
HCl 10% @ 15 min	ASTM D1308	No effect
H ₂ SO ₄ 5%	ASTM D1308	No change (240 hours)
Humidity Resistance 100% RH @ 95°F	ASTM D714	Passes 4000 hrs
	ASTM D2247	
Salt Spray Resistance 5% Salt Fog @ 95°F	ASTM B117	Passes 4000 hrs
	ASTM D1654	Passes 4000 hrs
Color Retention @ 45°, Florida	ASTM D2244	10 years, Max 5 fade
Chalk Resistance @ 45°, Florida	ASTM D659	10 years, Max 8 chalk

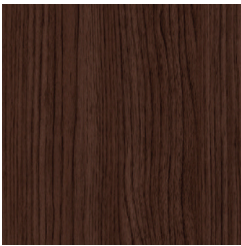
For warranty periods, please consult with our team.



Sesame Seed
GWP005



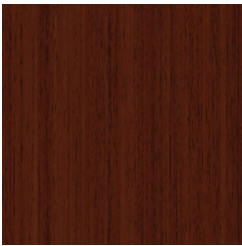
Golden Brown
GWP006



Stout
GWP013



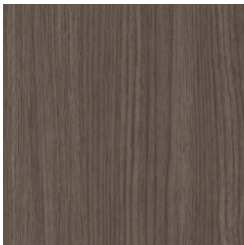
Shadow Brown
GWP016



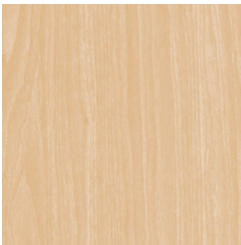
Maroon
GWP017



Spring Dusk
GWP020



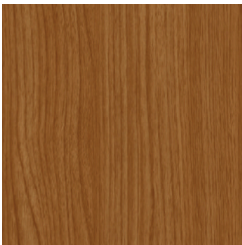
Woodstock
GWP022



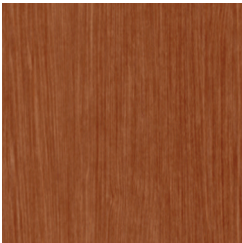
Clear Beige
GWP023



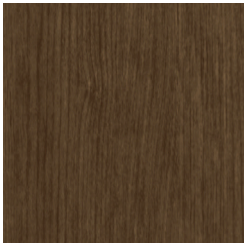
Cereal Rye
GWP028



Toast
GWP032



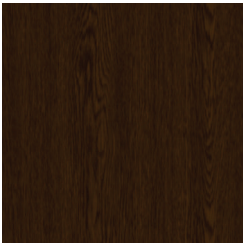
Auburn
GWP039



Dark Forest
GWP041



Almond Biscotti
GWP042



Cocoa Powder
GWP044



Rustic Garden
GWP046



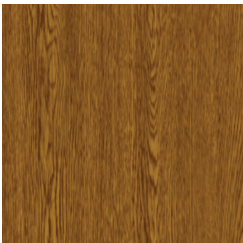
Gold Rush
GWP050



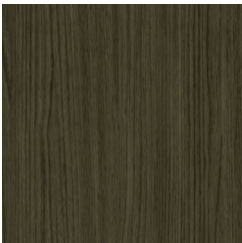
Cream Wood
GWP052



Sage Wood
GWP053



Autumn Apple
GWP054



Marshlands
GWP061

Given the limitations of commercial printing, all colors illustrated in this brochure are as close to the actual colors as possible. For actual colors, please request for material samples from our specialist.

Grand View reserves the right to change the color offering on our marketing materials without notice.

For warranty periods, please consult with our team.



Nut Brown
GWP062



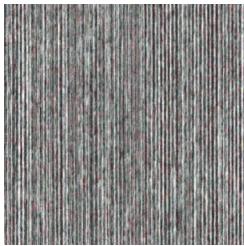
Winter Mountain
GWP066



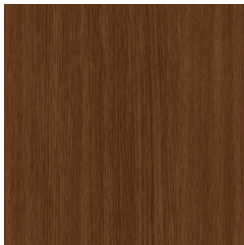
Northern Grove
GWP067



Oklahoma Wheat
GWP069



Cool Sand
GWP071



Medium Brown
GWP072



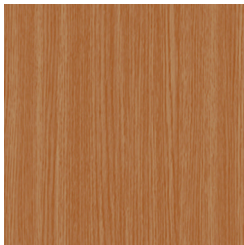
Ash Brown
GWP080



Dun Fort
GWP081



Golden Sunset
GWP088



Sun Tan
GWP100



Toasted Almond
GWP101



Olive Grey
GWP102



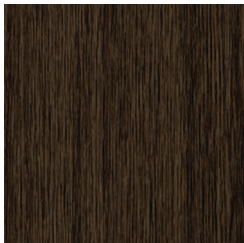
American Aspen
GWP105



Golden Hay
GWP107



Alder Brown
GWP108



Mocha Syrup
GWP109



Woodland
GWP111

Given the limitations of commercial printing, all colors illustrated in this brochure are as close to the actual colors as possible. For actual colors, please request for material samples from our specialist.

Grand View reserves the right to change the color offering on our marketing materials without notice.

For warranty periods, please consult with our team.



Bambi
GWP002



Sepia Sunset
GWP003



Tawny Brown
GWP004



Chestnut
GWP008



Butterscotch
GWP011



Amber Ale
GWP012



Beach Log
GWP014



Cinnamon Toast
GWP018



Autumn Dawn
GWP035



Natural Glow
GWP036



Roasted Pecan
GWP037



Fawn Deer
GWP038



Caramel Macchiato
GWP056



Direwolf
GWP096



Caramel Malt
GWP110

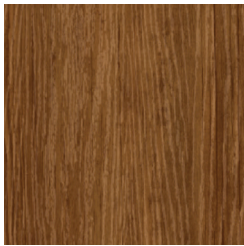
Given the limitations of commercial printing, all colors illustrated in this brochure are as close to the actual colors as possible. For actual colors, please request for material samples from our specialist.

Grand View reserves the right to change the color offering on our marketing materials without notice.

Small Knar Wood Finish

4mm or 6mm Thick Fire Rated ACM

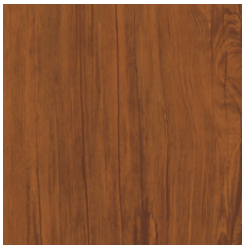
For warranty periods, please consult with our team.



Acorn
GWP031



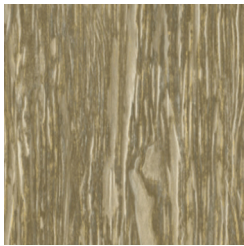
Mystic Sunset
GWP033



Pretzel
GWP034



Ranchwood
GWP043



Mossy Grey
GWP048



Crisp Morning
GWP051



Hazelnut
GWP055



Eclipse
GWP058



Fallen Leaves
GWP059



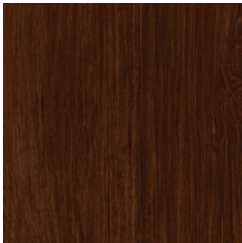
Wild Fox
GWP060



Smoked Oak
GWP073



Grain Harvest
GWP087



Chocolate Cherry
GWP089



Ecru Grey
GWP090



Toasted Barley
GWP104



River House
GWP113



Java Bean
GWP114

Given the limitations of commercial printing, all colors illustrated in this brochure are as close to the actual colors as possible. For actual colors, please request for material samples from our specialist.

Grand View reserves the right to change the color offering on our marketing materials without notice.

For warranty periods, please consult with our team.



Mocha
GWP064



Chiffon Cake
GWP065



Espresso
GWP068



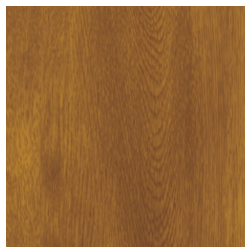
Sweet Biscuit
GWP070



Latte
GWP082



Clover Honey
GWP091



Gingerbread
GWP092



Black Cherry
GWP103

Given the limitations of commercial printing, all colors illustrated in this brochure are as close to the actual colors as possible. For actual colors, please request for material samples from our specialist.

Grand View reserves the right to change the color offering on our marketing materials without notice.

Available Finish Lines

Solid & Metallic Standard Finish Color Line

This color line is handpicked from the most popular color selections our clients use. This color pallet is always in stock allowing architects and designers to readily choose from and meet project delivery schedules.

Natural Woodgrain Design Line

We understand wood requires thorough maintenance over time and is often more expensive compared to other materials. Hence, we offer over 70 woodgrain patterns to choose from.

Natural Earth Stone Design Line

Inspired by nature, this line offers unique texture while displaying imitations of stone. This product enables designers to be truly creative to utilize variations of texture, pattern, color and gloss.

True Stone Honeycomb Composite Line

Harvested from the earth, real stone panels offer a timeless design for pure elegant aesthetics. The patterns of each stone panel are different as they occur in the natural form directly from the earth.





North American Distributor

Grand View Distribution Corp

2386 Oak Street, Vancouver, BC, V6H 4J1

Toll-free call: 1-888-617-8288

Phone: 604-670-8828

Fax: 604-670-8768

info@grandviewdistribution.com

www.grandviewdistribution.com



GRAND VIEW
DISTRIBUTION CORP