

# GRAND VIEW

## DRY JOINT RAINSCREEN SYSTEM

### SERIES 35

#### TABLE OF CONTENTS

- E-01 ELEVATIONS
- E-02 ELEVATIONS
- D-01 HORIZONTAL JOINT DETAIL
- D-02 VERTICAL JOINT DETAIL
- D-03 BASE DETAIL
- D-04 WINDOW SILL DETAIL
- D-05 WINDOW JAMB DETAIL
- D-06 WINDOW HEAD DETAIL
- D-07 PARAPET FLASHING DETAIL
- D-08 PARAPET CAP DETAIL
- D-09 SOFFIT PANEL DETAIL
- D-10 COLUMN HORIZONTAL JOINT DETAIL
- D-11 COLUMN VERTICAL JOINT DETAIL
- D-12 COLUMN BASE DETAIL
- D-13 OUTSIDE CORNER PANEL DETAIL
- D-14 INSIDE CORNER PANEL DETAIL
- D-15 INSIDE CORNER WINDOW DETAIL

#### TABLE OF CONTENTS

TITLE

DRY JOINT RAINSCREEN SYSTEM - SERIES 35 (4mm ACM)

PROJECT

35

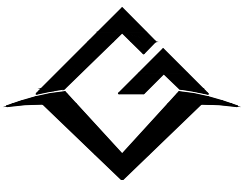
SERIES

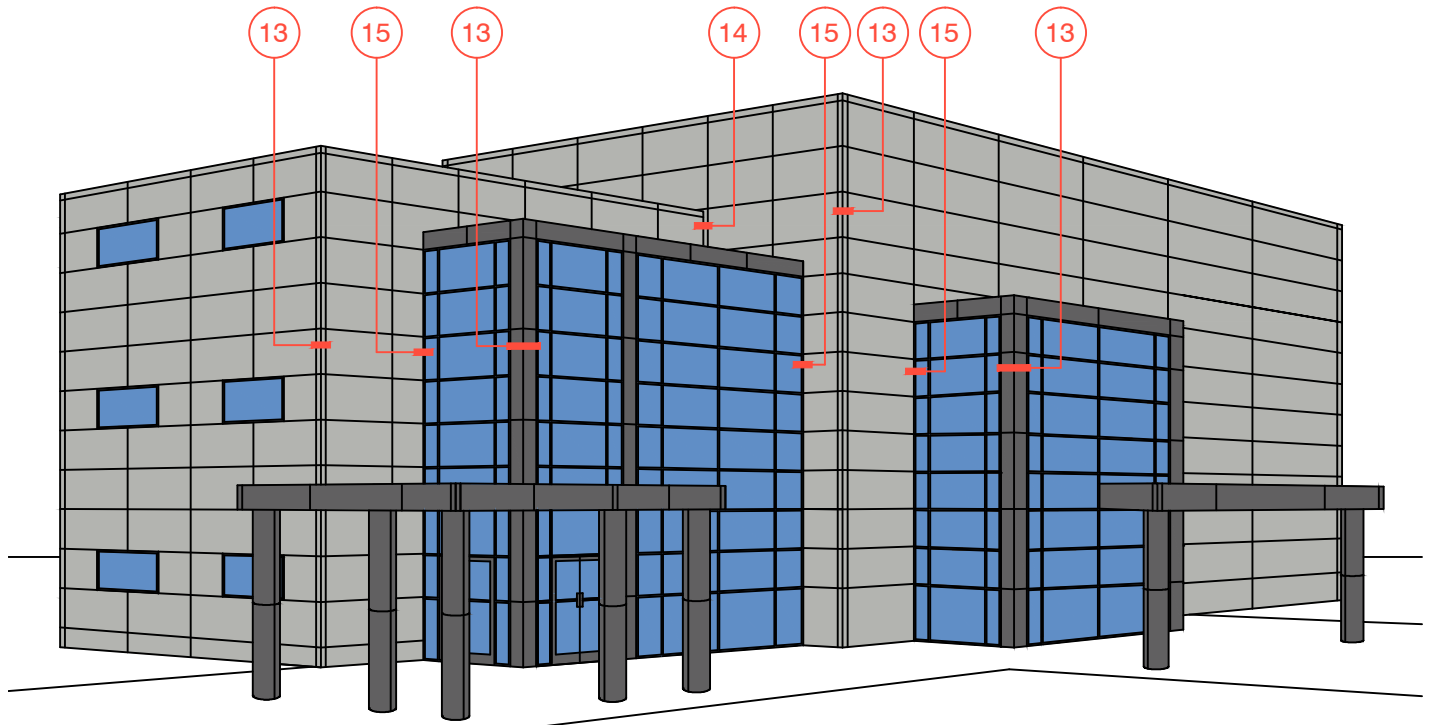
**GRAND VIEW**  
ENGINEERED ALUMINUM SYSTEM

#570-999 WEST BROADWAY  
VANCOUVER BC V5Z 1K5

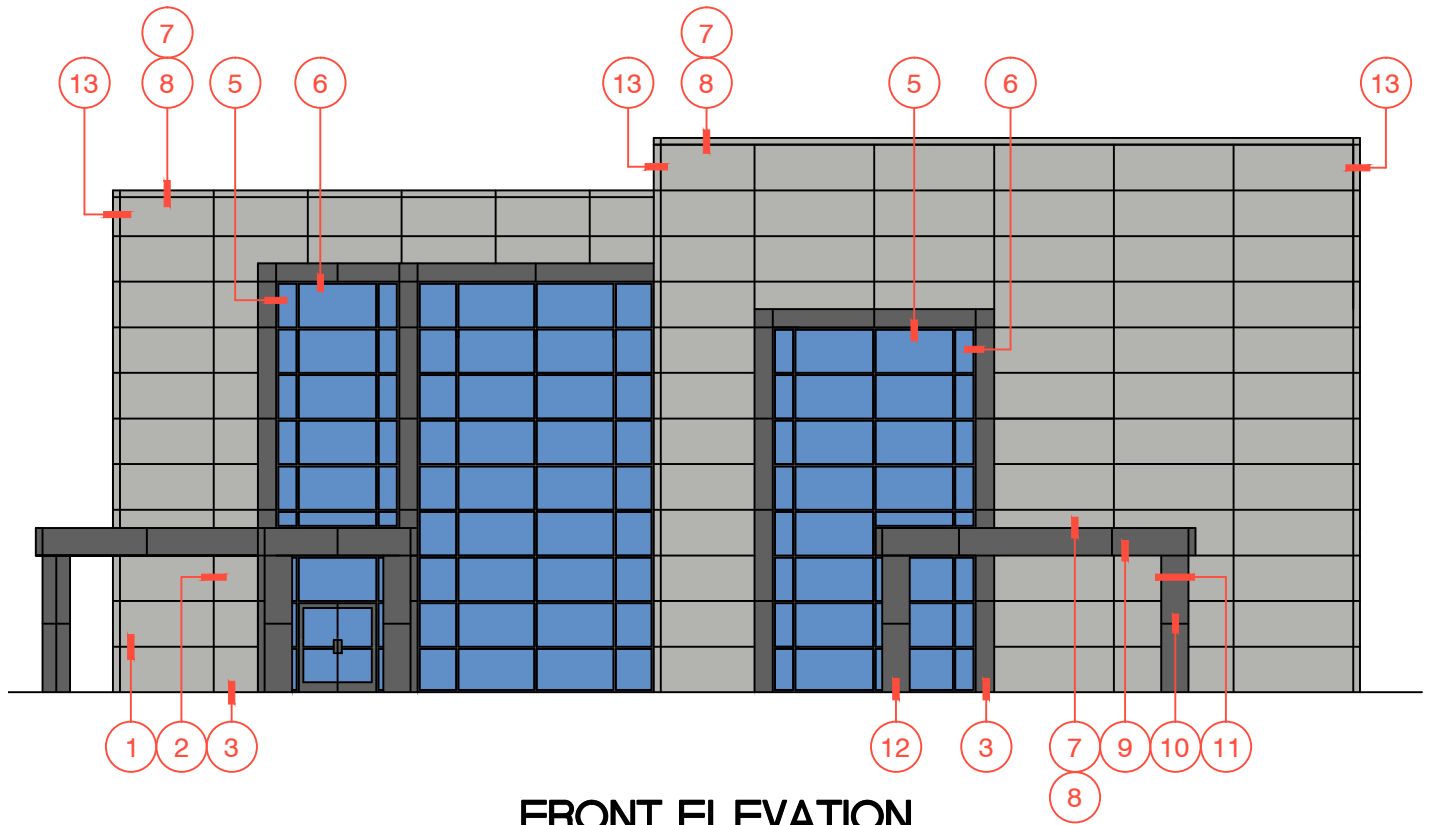
D-00

DRAWING NO.





ISOMETRIC



FRONT ELEVATION

ELEVATIONS

TITLE

DRY JOINT RAINSCREEN SYSTEM - SERIES 35 (4mm ACM)

PROJECT

35

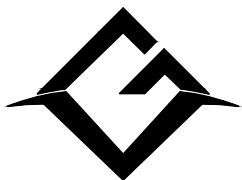
SERIES

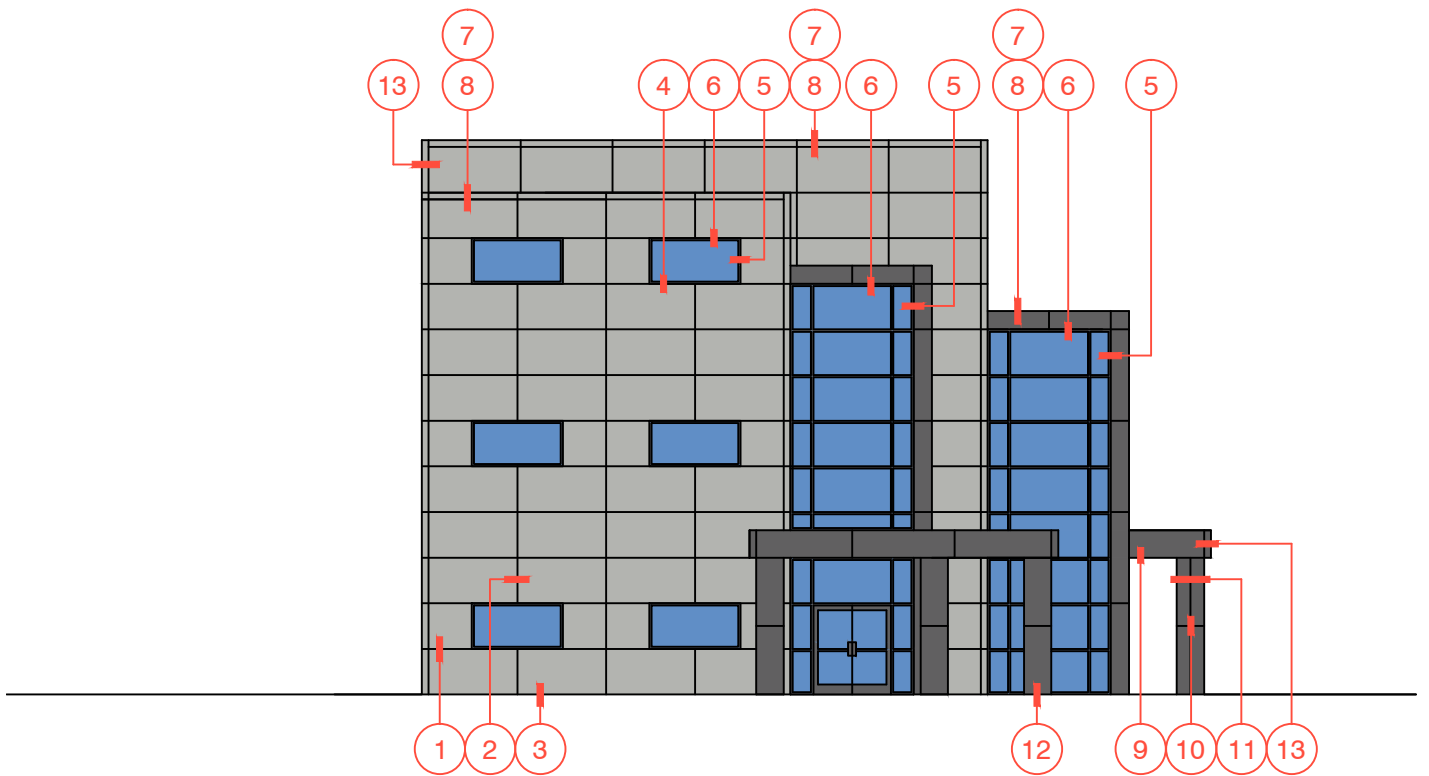
GRAND VIEW  
ENGINEERED ALUMINUM SYSTEM

#570-999 WEST BROADWAY  
VANCOUVER BC V5Z 1K5

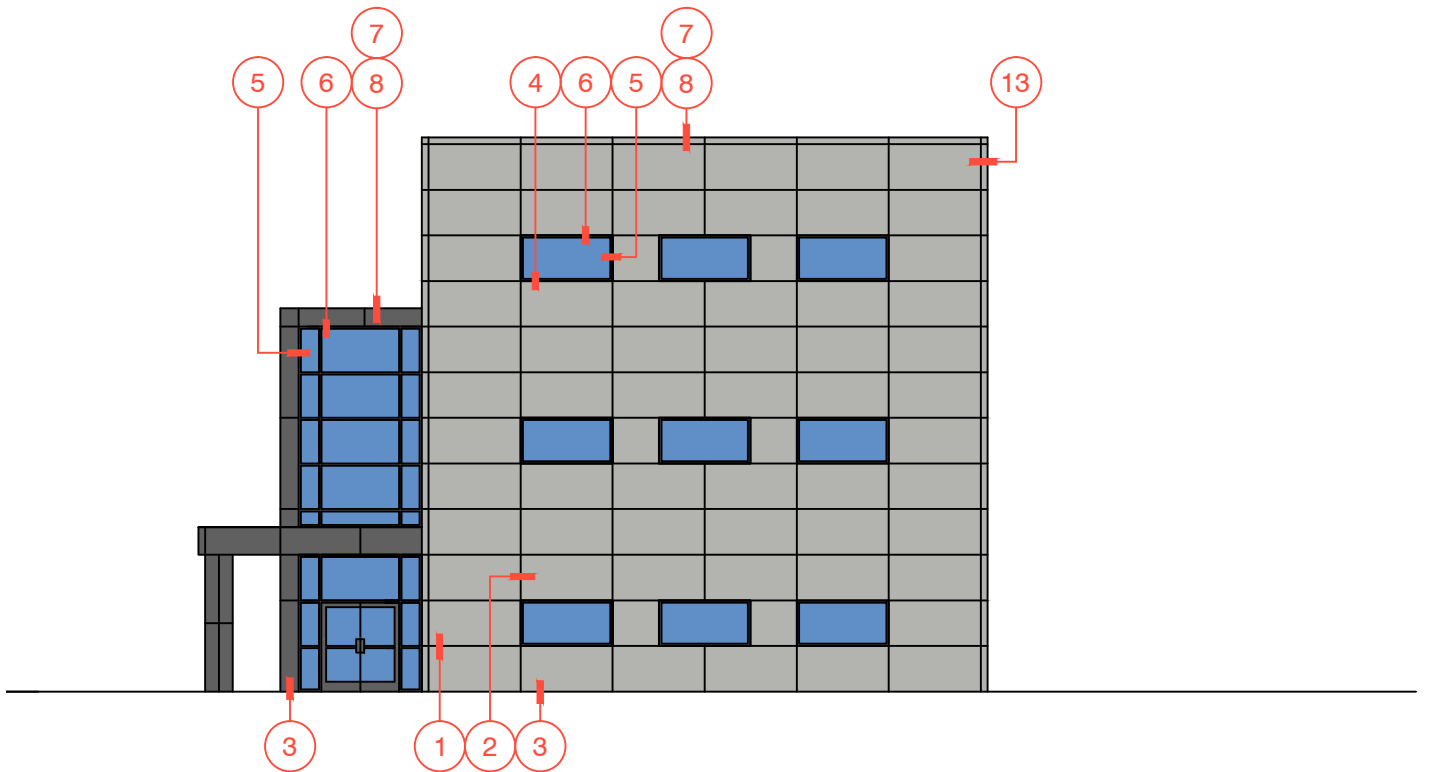
E-01

DRAWING NO.





**LEFT ELEVATION**



**RIGHT ELEVATION**

**ELEVATIONS**

TITLE

**DRY JOINT RAINSCREEN SYSTEM - SERIES 35 (4mm ACM)**

PROJECT

**35**

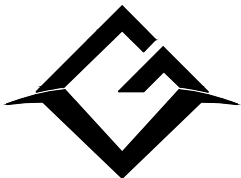
SERIES

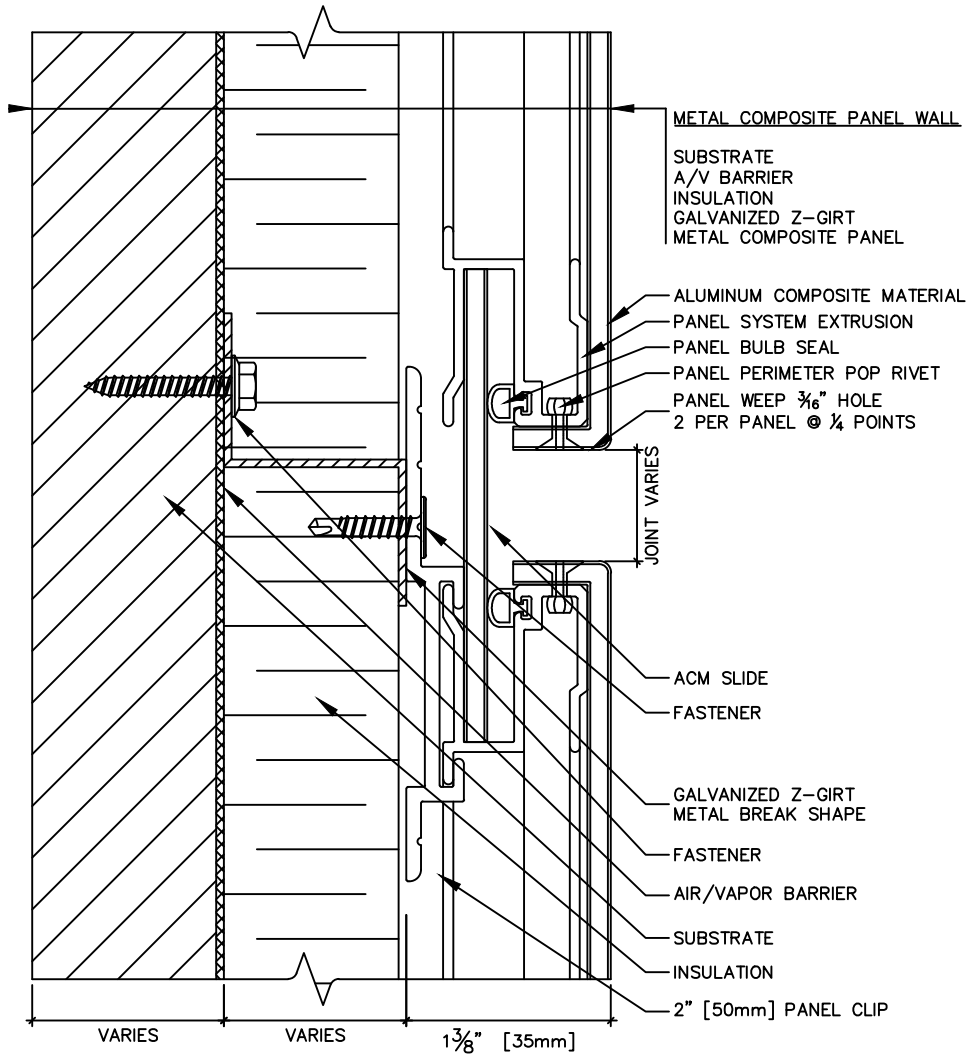
**GRAND VIEW**  
ENGINEERED ALUMINUM SYSTEM

#570-999 WEST BROADWAY  
VANCOUVER BC V5Z 1K5

**E-02**

DRAWING NO.





## HORIZONTAL JOINT DETAIL

TITLE

DRY JOINT RAINSCREEN SYSTEM - SERIES 35 (4mm ACM)

PROJECT

35

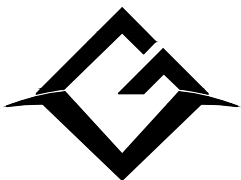
SERIES

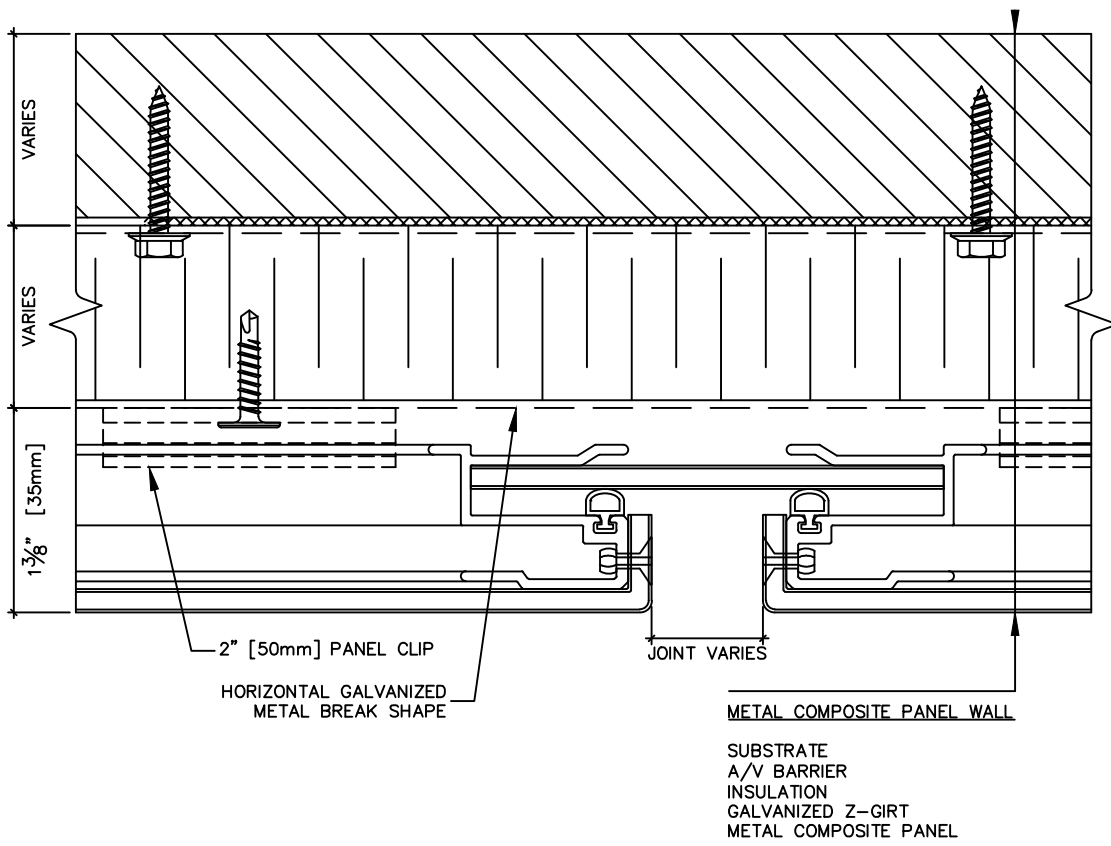
**GRAND VIEW**  
ENGINEERED ALUMINUM SYSTEM

#570-999 WEST BROADWAY  
VANCOUVER BC V5Z 1K5

D-01

DRAWING NO.





**VERTICAL JOINT DETAIL**

TITLE

**DRY JOINT RAINSCREEN SYSTEM - SERIES 35 (4mm ACM)**

PROJECT

**35**

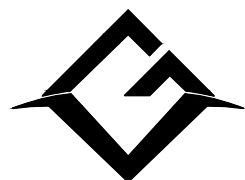
SERIES

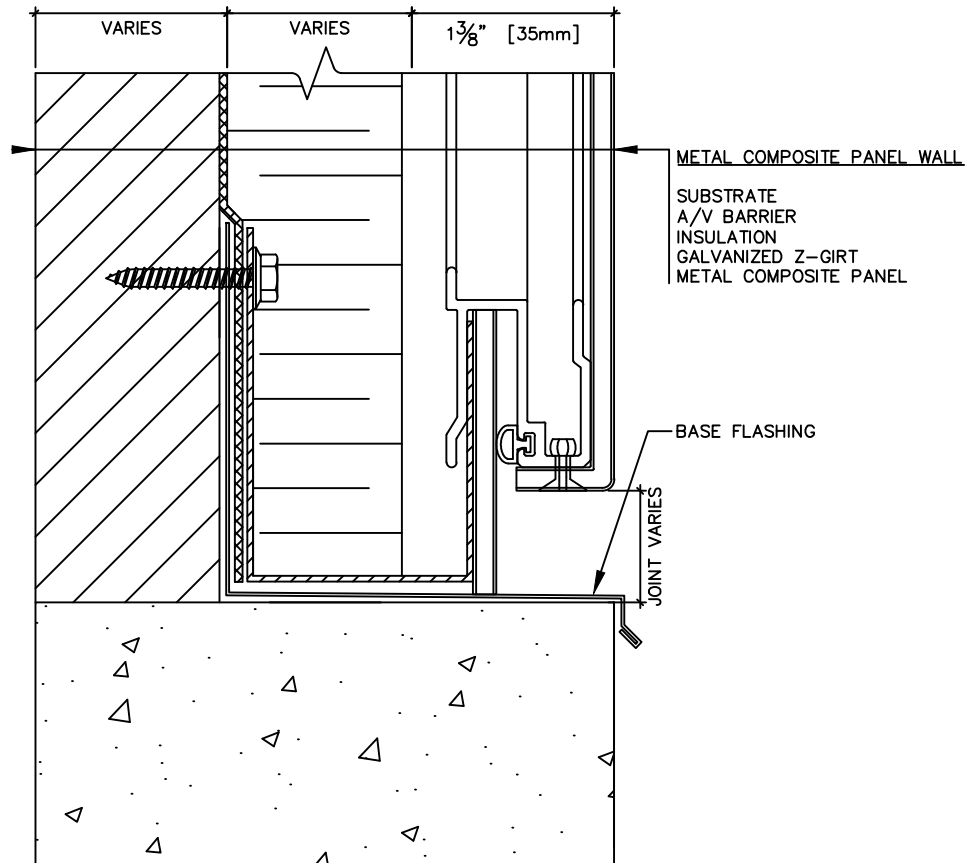
**GRAND VIEW**  
ENGINEERED ALUMINUM SYSTEM

#570-999 WEST BROADWAY  
VANCOUVER BC V5Z 1K5

**D-02**

DRAWING NO.





## BASE DETAIL

TITLE

PROJECT

DRY JOINT RAINSCREEN SYSTEM - SERIES 35 (4mm ACM)

35

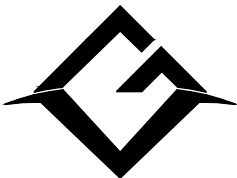
SERIES

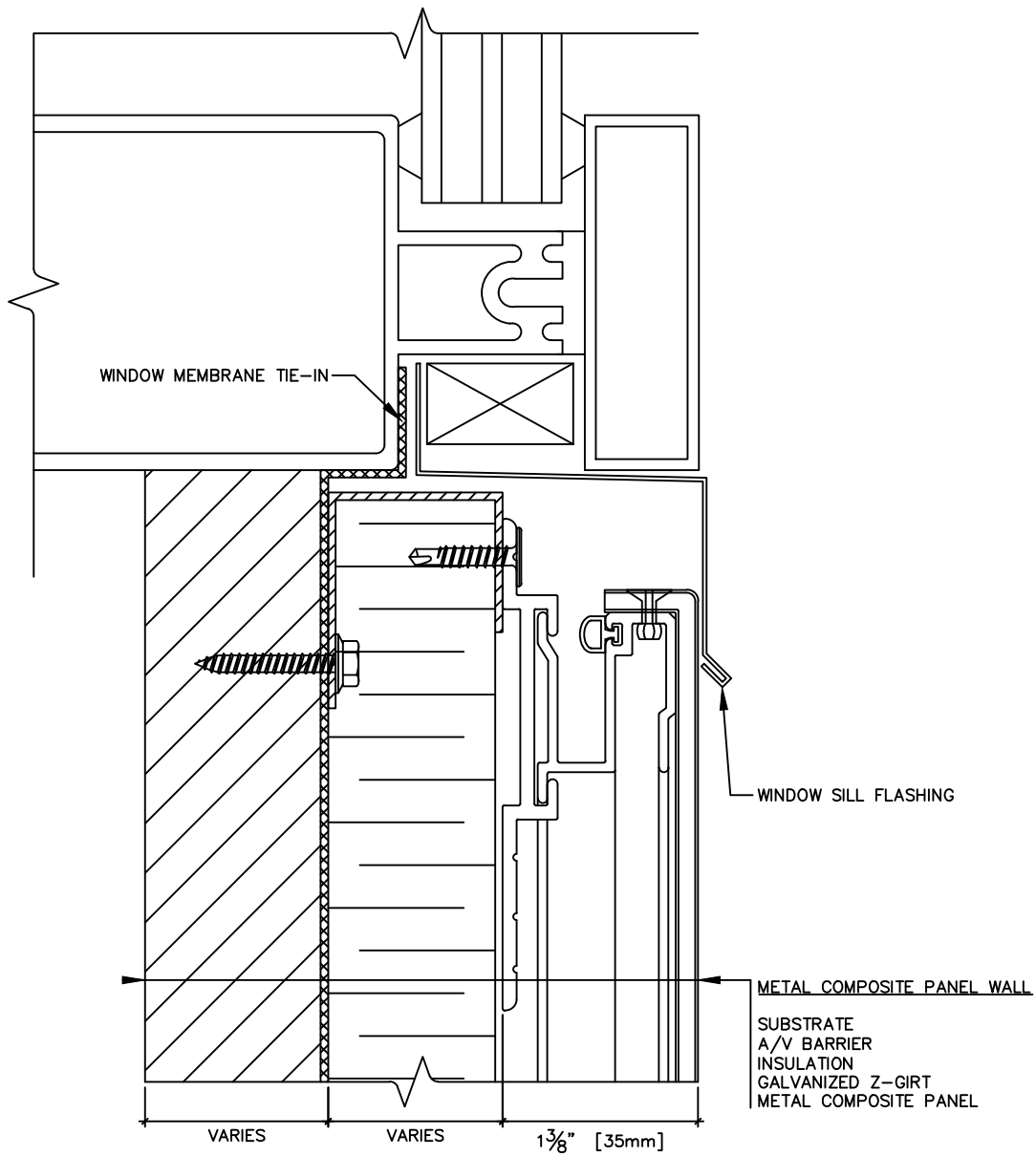
**GRAND VIEW**  
ENGINEERED ALUMINUM SYSTEM

#570-999 WEST BROADWAY  
VANCOUVER BC V5Z 1K5

D-03

DRAWING NO.





**WINDOW SILL DETAIL**

TITLE

**DRY JOINT RAINSCREEN SYSTEM - SERIES 35 (4mm ACM)**

PROJECT

**35**

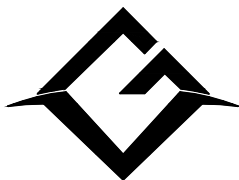
SERIES

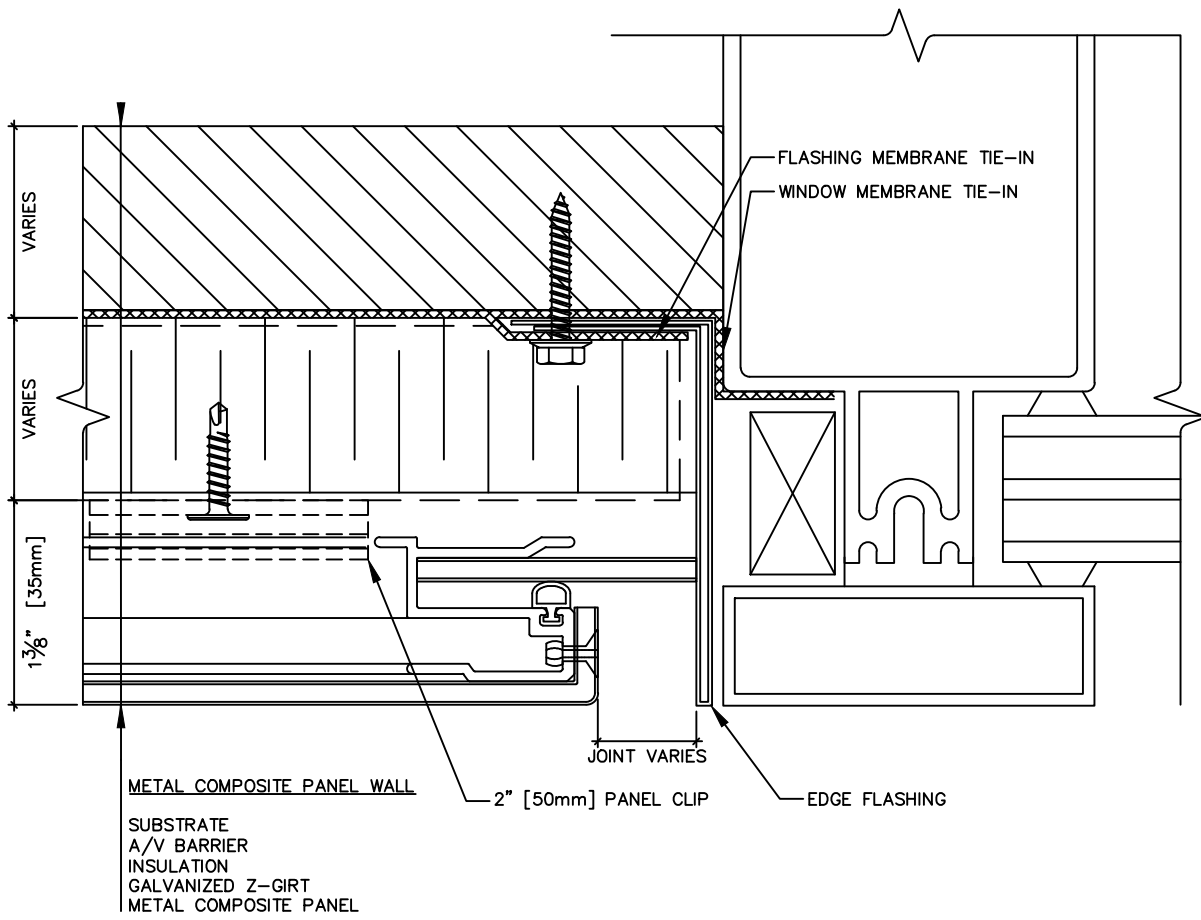
**GRAND VIEW**  
ENGINEERED ALUMINUM SYSTEM

#570-999 WEST BROADWAY  
VANCOUVER BC V5Z 1K5

**D-04**

DRAWING NO.





**WINDOW JAMB DETAIL**

TITLE

**DRY JOINT RAINSCREEN SYSTEM - SERIES 35 (4mm ACM)**

PROJECT

**35**

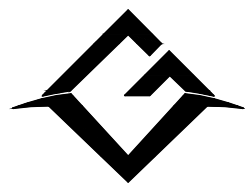
SERIES

**GRAND VIEW**  
ENGINEERED ALUMINUM SYSTEM

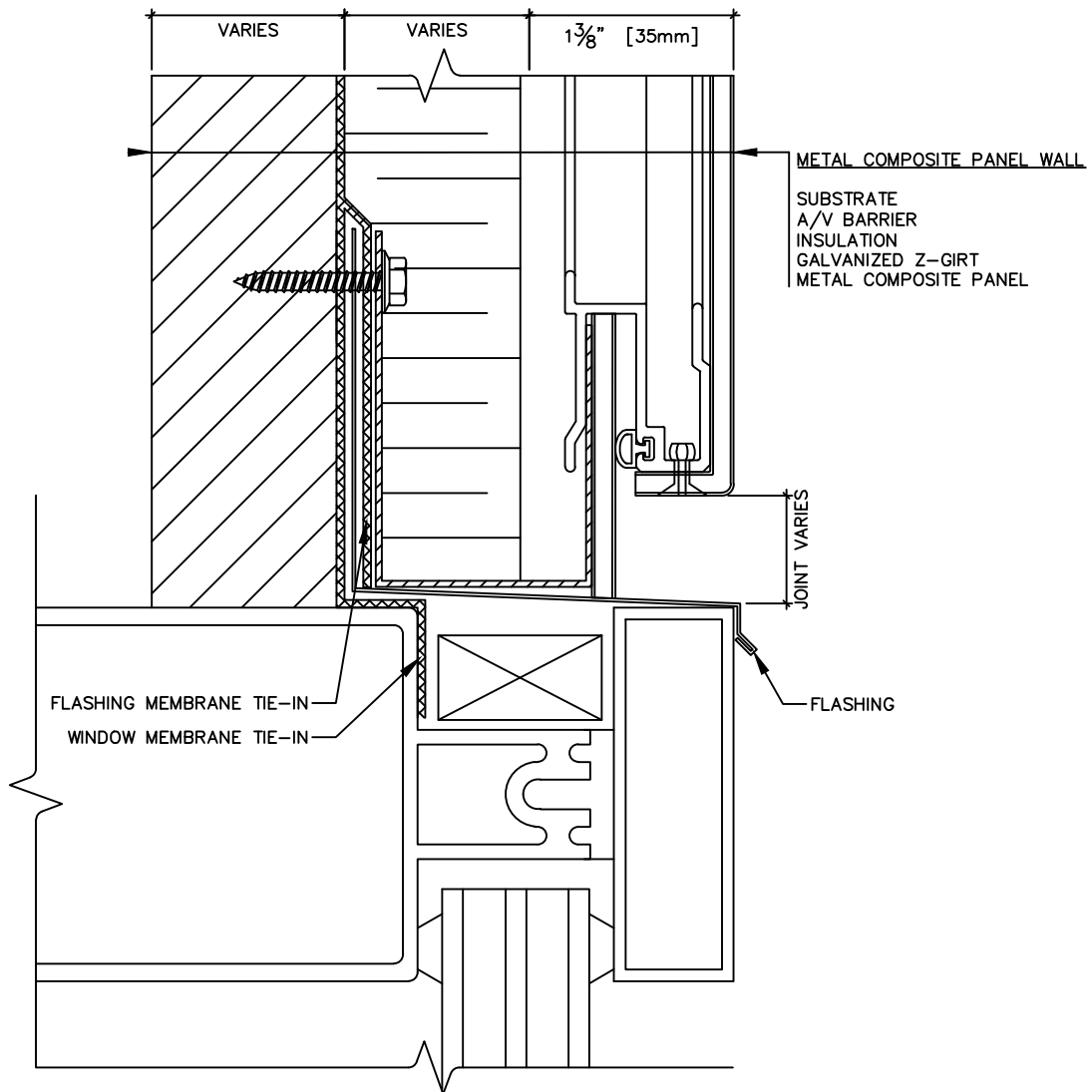
#570-999 WEST BROADWAY  
VANCOUVER BC V5Z 1K5

**D-05**

DRAWING NO.







## WINDOW HEAD DETAIL

TITLE

DRY JOINT RAINSCREEN SYSTEM - SERIES 35 (4mm ACM)

PROJECT

35

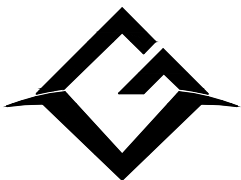
SERIES

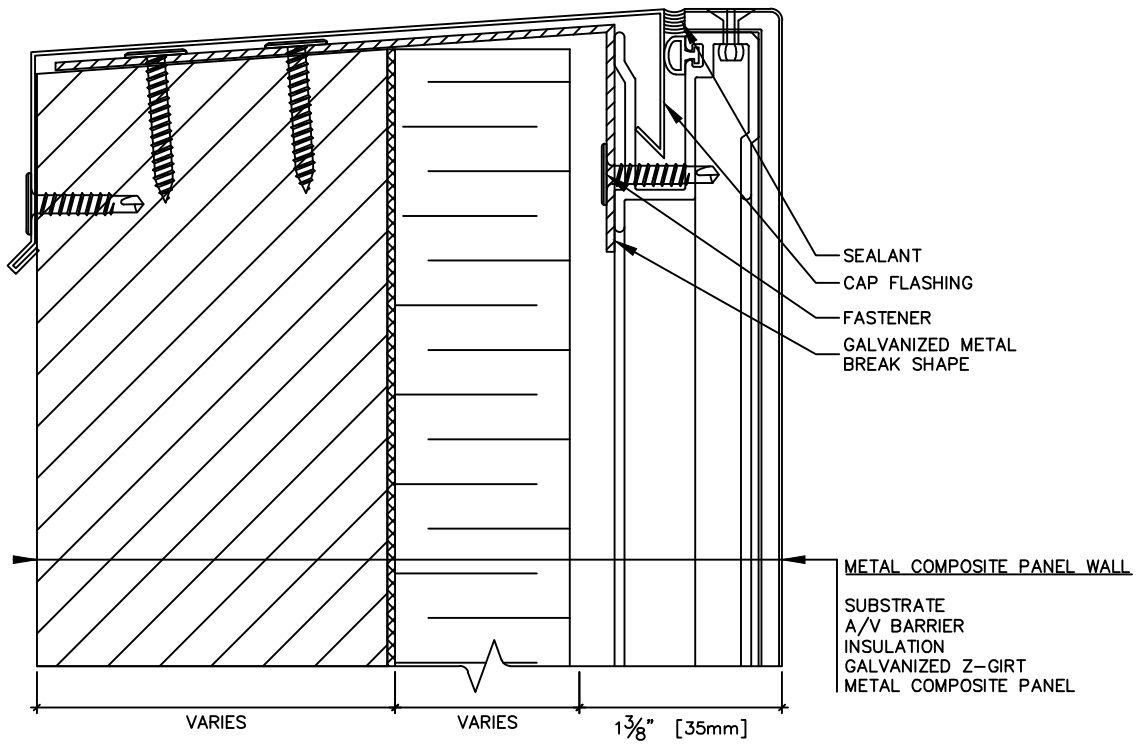
**GRAND VIEW**  
ENGINEERED ALUMINUM SYSTEM

#570-999 WEST BROADWAY  
VANCOUVER BC V5Z 1K5

D-06

DRAWING NO.





**PARAPET FLASHING DETAIL**

TITLE

**DRY JOINT RAINSCREEN SYSTEM - SERIES 35 (4mm ACM)**

PROJECT

**35**

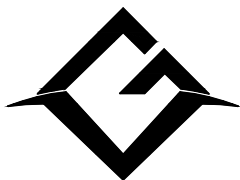
SERIES

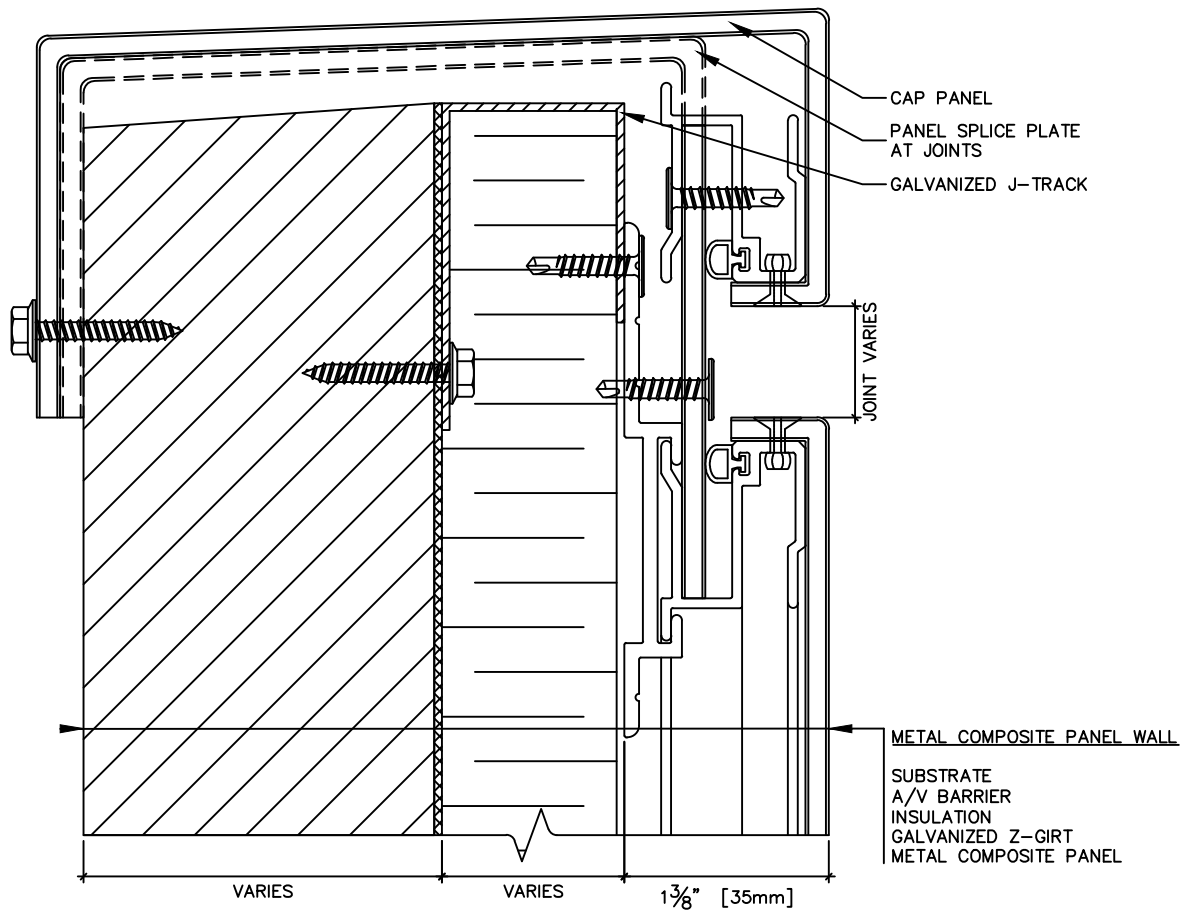
**GRAND VIEW**  
 ENGINEERED ALUMINUM SYSTEM

#570-999 WEST BROADWAY  
 VANCOUVER BC V5Z 1K5

**D-07**

DRAWING NO.





**PARAPET CAP PANEL DETAIL**

TITLE

**DRY JOINT RAINSCREEN SYSTEM - SERIES 35 (4mm ACM)**

PROJECT

**35**

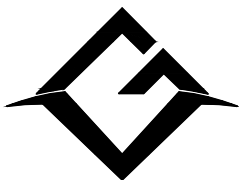
SERIES

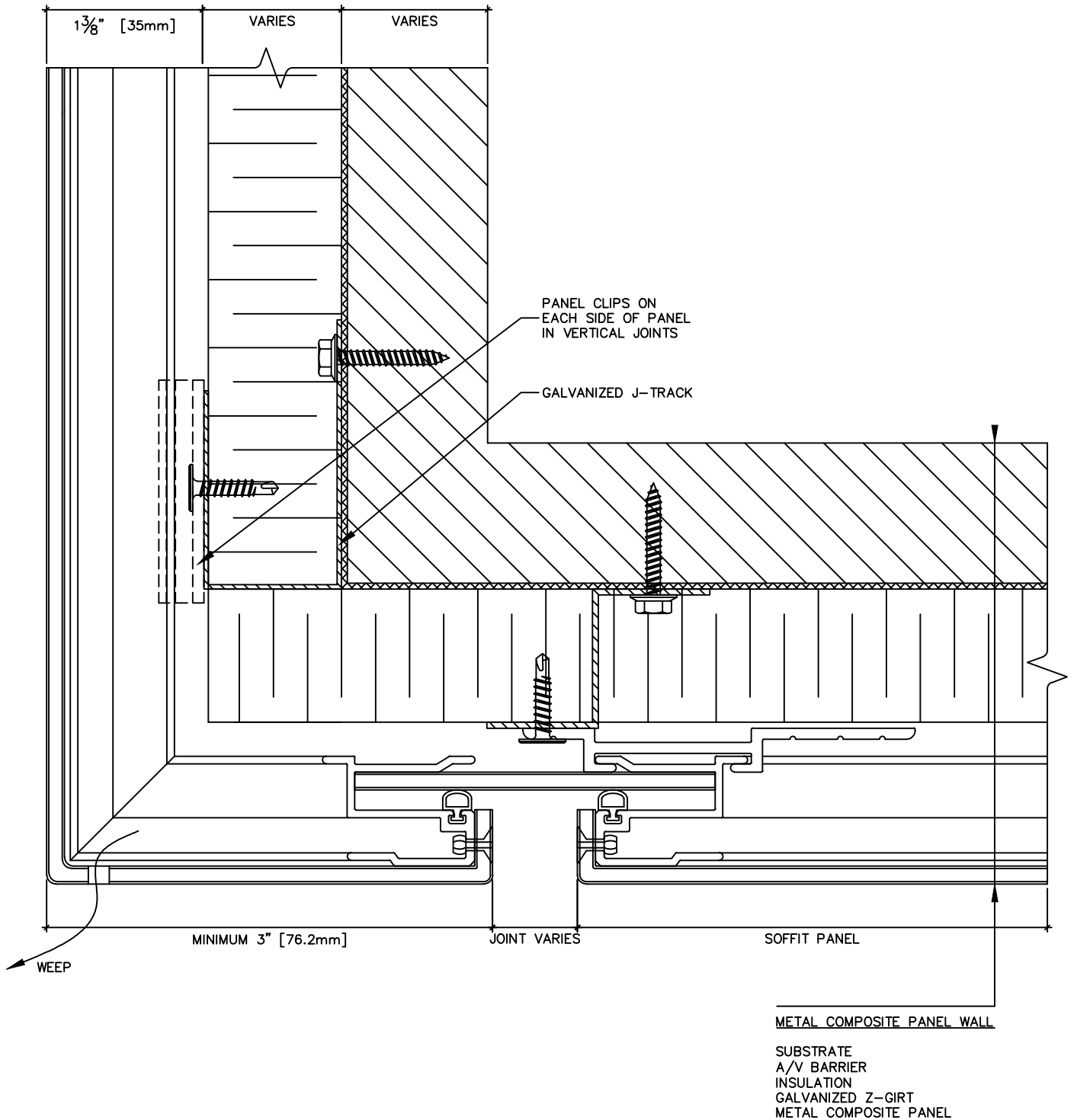
**GRAND VIEW**  
ENGINEERED ALUMINUM SYSTEM

#570-999 WEST BROADWAY  
VANCOUVER BC V5Z 1K5

**D-08**

DRAWING NO.





## SOFFIT PANEL DETAIL

TITLE

DRY JOINT RAINSCREEN SYSTEM - SERIES 35 (4mm ACM)

PROJECT

35

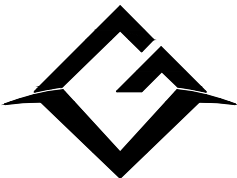
SERIES

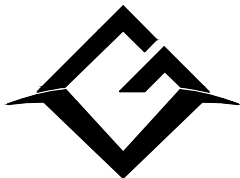
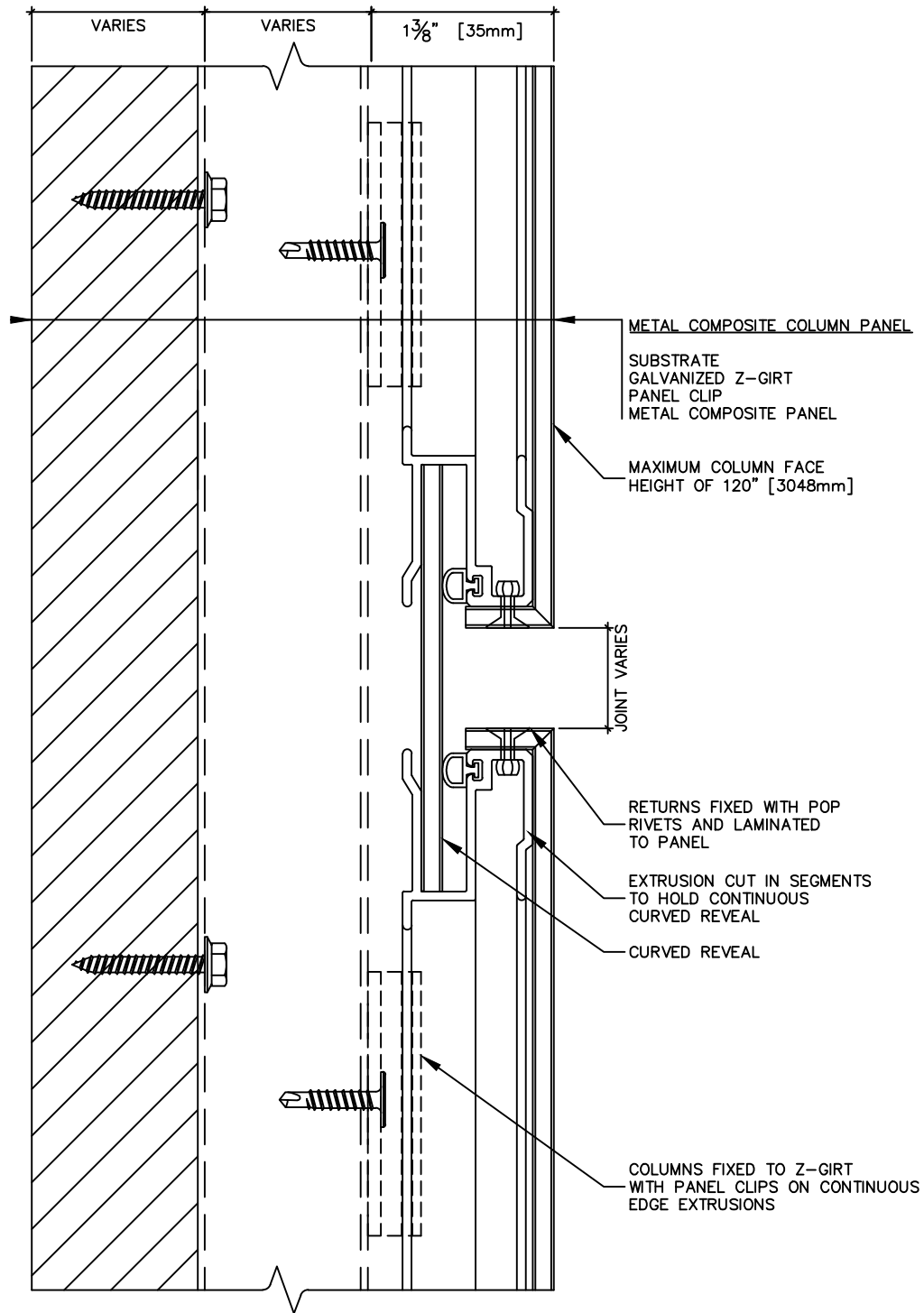
**GRAND VIEW**  
ENGINEERED ALUMINUM SYSTEM

#570-999 WEST BROADWAY  
VANCOUVER BC V5Z 1K5

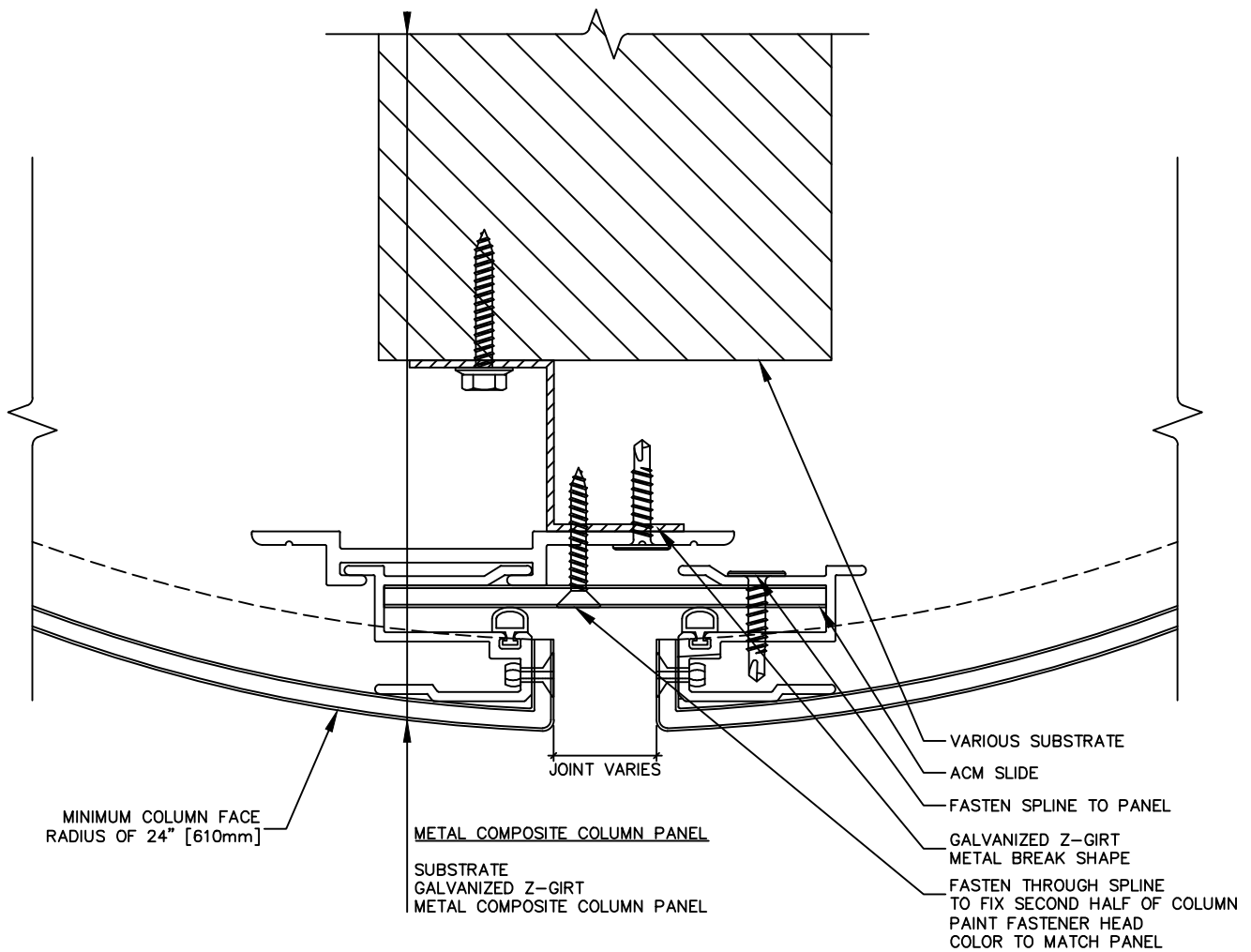
D-09

DRAWING NO.





<p>TITLE</p> <p><b>COLUMN HORIZONTAL JOINT DETAIL</b></p>	<p>PROJECT</p> <p><b>DRY JOINT RAISCREEN SYSTEM - SERIES 35 (4mm ACM)</b></p>		
	<p><b>35</b></p> <p>SERIES</p>	<p><b>GRAND VIEW</b></p> <p>ENGINEERED ALUMINUM SYSTEM</p>	<p>#570-999 WEST BROADWAY VANCOUVER BC V5Z 1K5</p>



**COLUMN VERTICAL JOINT DETAIL**

TITLE

**DRY JOINT RAINSCREEN SYSTEM - SERIES 35 (4mm ACM)**

PROJECT

**35**

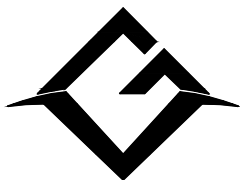
**GRAND VIEW**  
ENGINEERED ALUMINUM SYSTEM

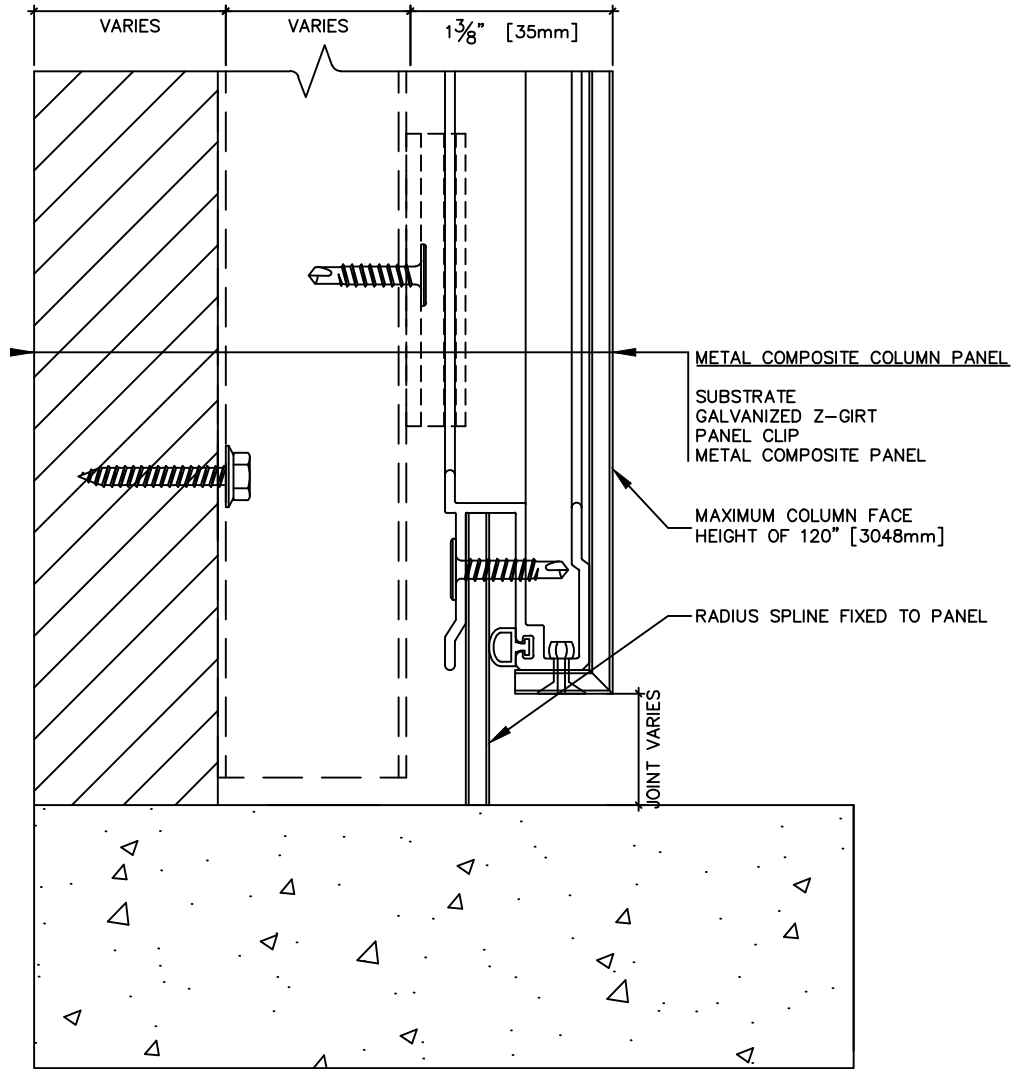
#570-999 WEST BROADWAY  
VANCOUVER BC V5Z 1K5

**D-11**

SERIES

DRAWING NO.





**COLUMN BASE DETAIL**

TITLE

**DRY JOINT RAINSCREEN SYSTEM - SERIES 35 (4mm ACM)**

PROJECT

**35**

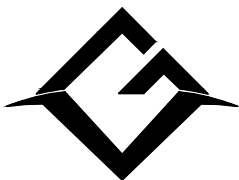
SERIES

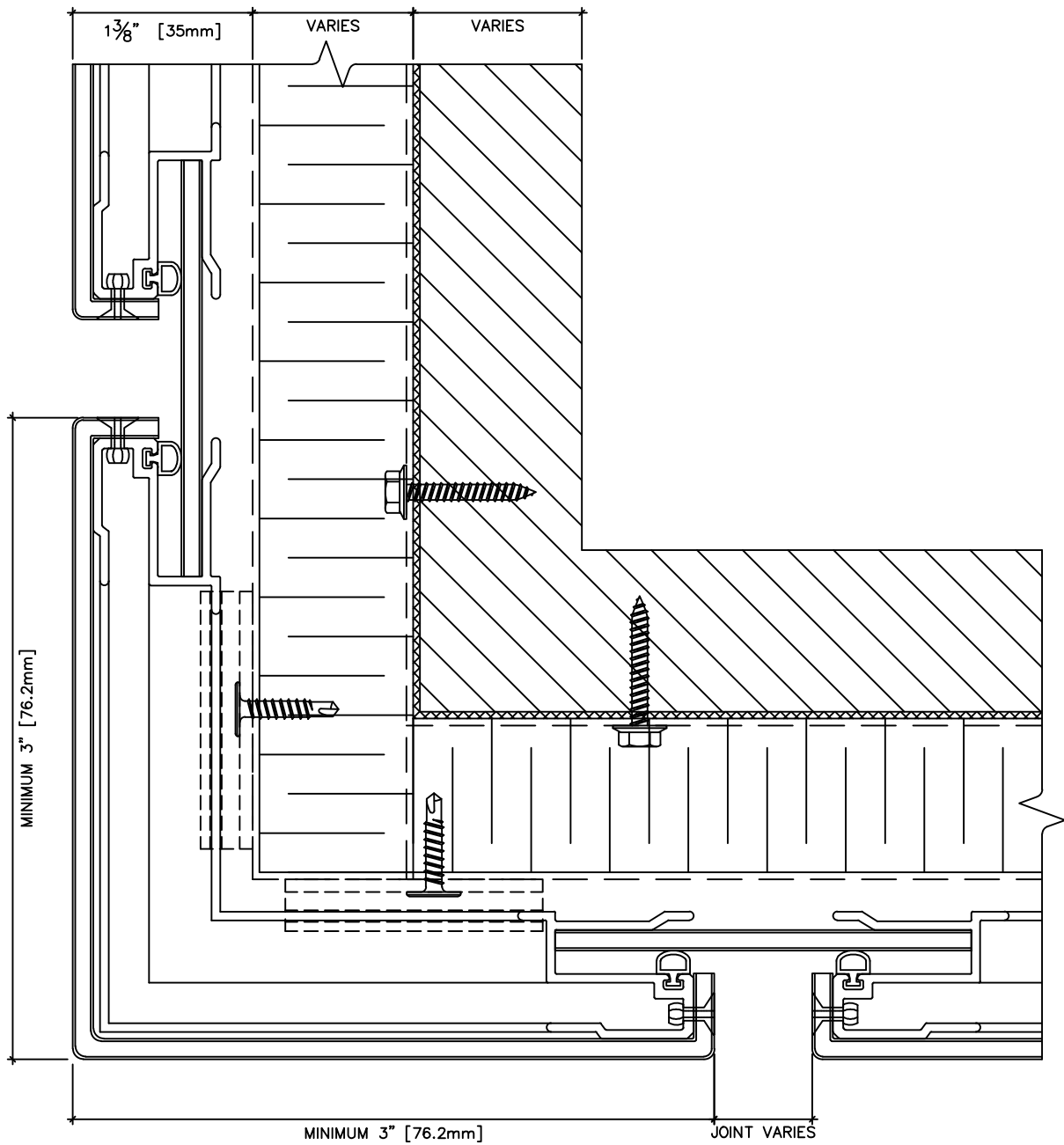
**GRAND VIEW**  
ENGINEERED ALUMINUM SYSTEM

#570-999 WEST BROADWAY  
VANCOUVER BC V5Z 1K5

**D-12**

DRAWING NO.





**OUTSIDE CORNER PLAN DETAIL**

TITLE

**DRY JOINT RAINSCREEN SYSTEM - SERIES 35 (4mm ACM)**

PROJECT

**35**

SERIES

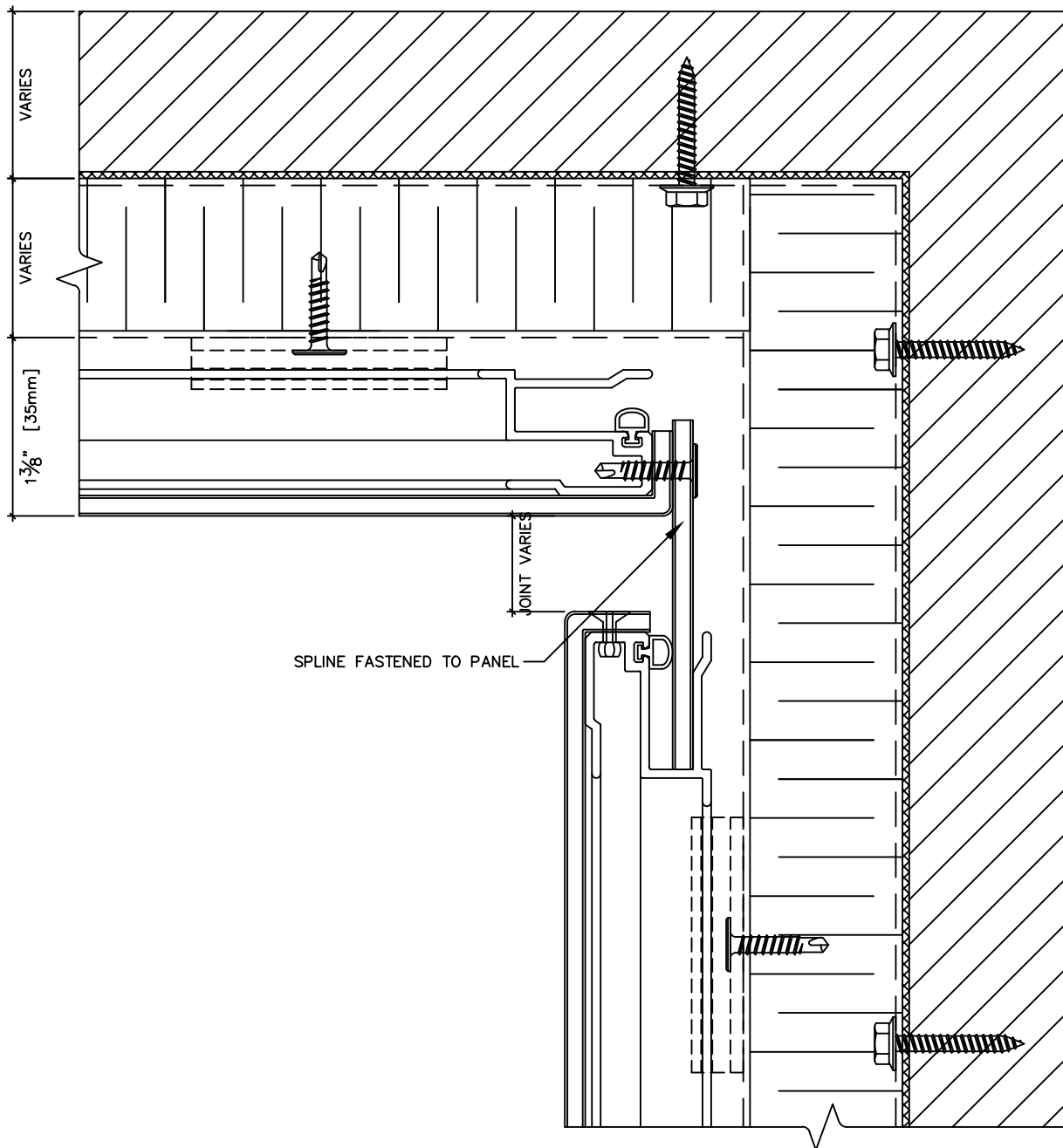
**GRAND VIEW**  
ENGINEERED ALUMINUM SYSTEM

#570-999 WEST BROADWAY  
VANCOUVER BC V5Z 1K5

**D-13**

DRAWING NO.





SPLINE FASTENED TO PANEL

JOINT VARIES

VARIES

VARIES

1 3/8" [35mm]

**INSIDE CORNER PANEL DETAIL**

TITLE

**DRY JOINT RAINSCREEN SYSTEM - SERIES 35 (4mm ACM)**

PROJECT

**35**

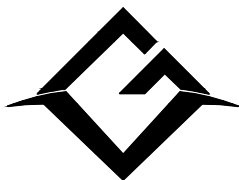
SERIES

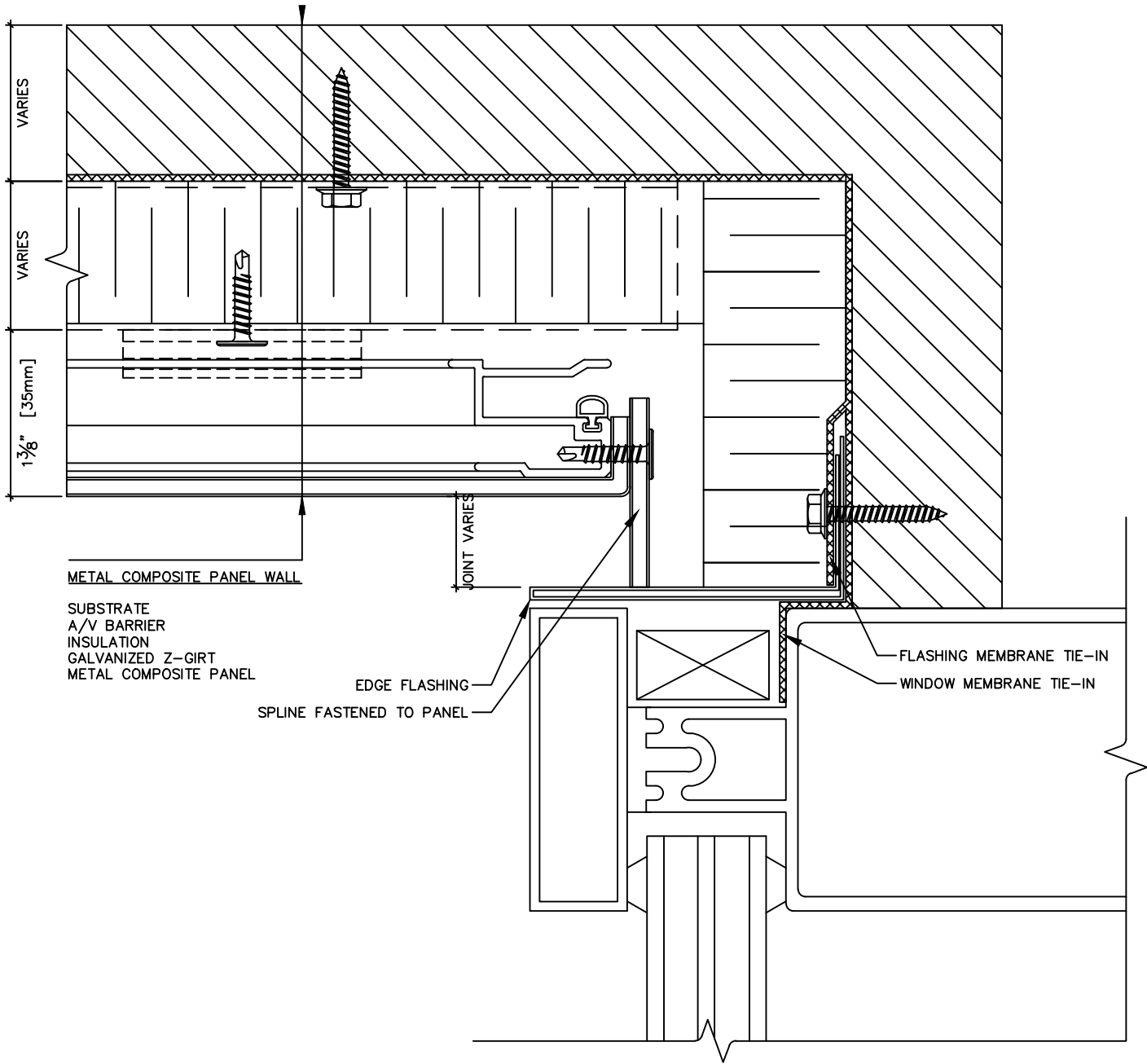
**GRAND VIEW**  
ENGINEERED ALUMINUM SYSTEM

#570-999 WEST BROADWAY  
VANCOUVER BC V5Z 1K5

**D-14**

DRAWING NO.





METAL COMPOSITE PANEL WALL

SUBSTRATE  
 A/V BARRIER  
 INSULATION  
 GALVANIZED Z-GIRT  
 METAL COMPOSITE PANEL

EDGE FLASHING  
 SPLINE FASTENED TO PANEL

FLASHING MEMBRANE TIE-IN  
 WINDOW MEMBRANE TIE-IN

# INSIDE CORNER WINDOW DETAIL

TITLE

DRY JOINT RAINSCREEN SYSTEM - SERIES 35 (4mm ACM)

PROJECT

35

**GRAND VIEW**  
 ENGINEERED ALUMINUM SYSTEM

#570-999 WEST BROADWAY  
 VANCOUVER BC V5Z 1K5

D-15

SERIES

DRAWING NO.

